

SOHO

NEW YORK
NY

11 GREENE STREET



CONCEPTUAL RENDERING

SPACE DETAILS

LOCATION

Northwest corner of Canal Street

APPROXIMATE SIZE

Ground Floor 7,794 SF*

Lower Level 4,028 SF*

Total 11,822 SF*

*Divisible

POSSESSION

Arranged

TERM

Long term

FRONTAGE

230 FT of wraparound

CEILING HEIGHT

Ground Floor 17 FT

Lower Level 12 FT

SITE STATUS

New construction

NEIGHBORS

Studio Anise, The Webster, Canal Street Market, Soho Grand, Lucky Strike, Canal Street Oysters, Planet Fitness and Barry's Bootcamp

COMMENTS

Located at the base of an impeccably designed ground up six-story mixed use development project

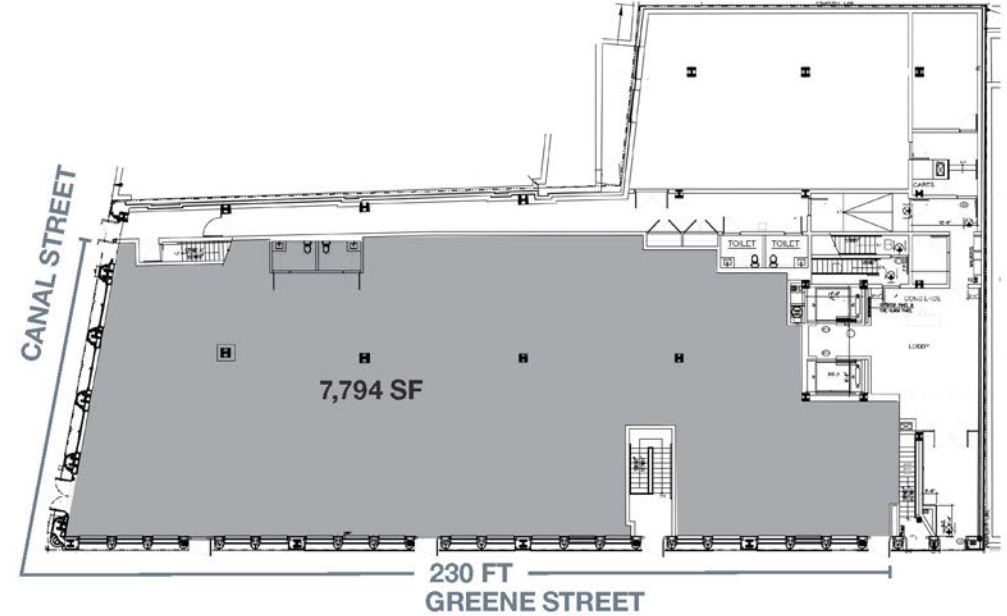
Limited columns and ample frontage on both Greene and Canal Streets

Steps from the Canal Street Station that provides access to the **A C E**

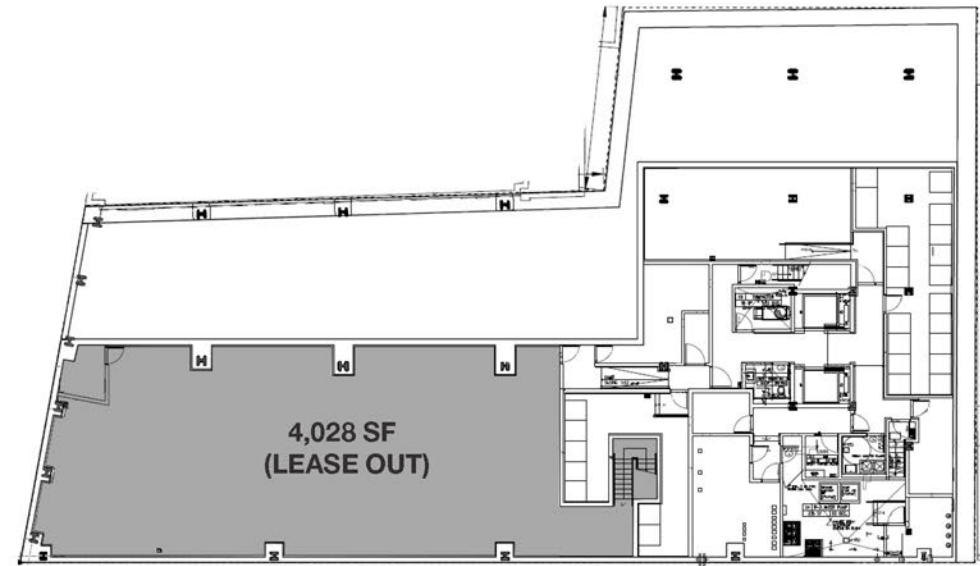
N Q R W trains

One may also access the **4 6 J Z** trains from Lafayette Street

GROUND FLOOR



LOWER LEVEL



ADDITIONAL RENDERINGS

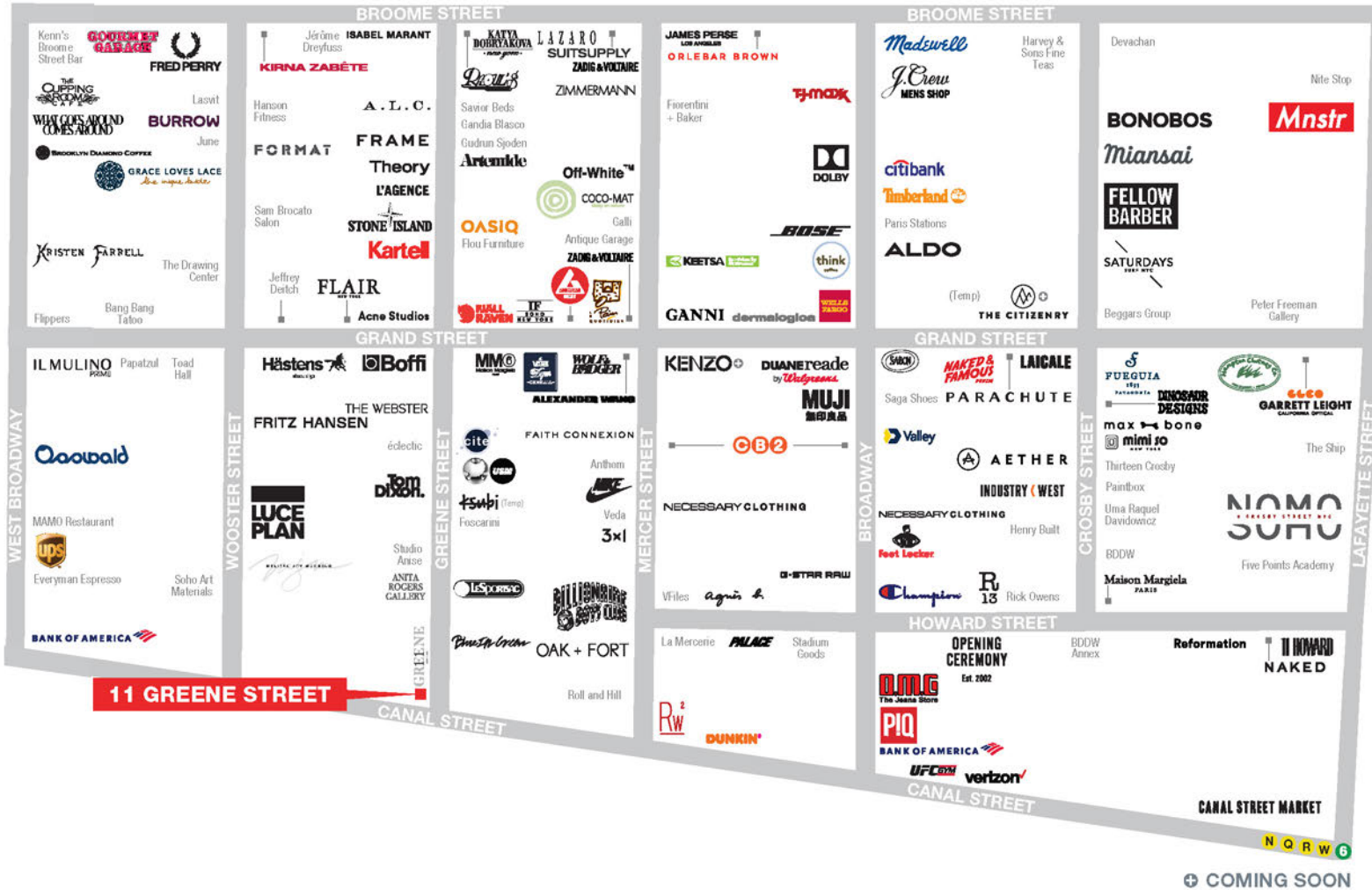
INTERIOR VIEW



EXTERIOR VIEW



AREA RETAIL



CONTACT EXCLUSIVE AGENTS

ROSS BERKOWITZ
212.916.3388
ross.berkowitz@ngkf.com

JAKE SIEGEL
212.916.2928
jake.siegel@ngkf.com

ANDREW TAUB
212.372.2011
andrew.taub@ngkf.com



NGKF.COM

© 2020 NEWMARK KNIGHT FRANK RETAIL. The information contained herein has been obtained from sources deemed reliable but has not been verified and no guarantee, warranty or representation, either express or implied, is made with respect to such information. Terms of sale or lease and availability are subject to change or withdrawal without notice.

