

666

BROADWAY

BOND X
BROADWAY



JOIN NOHO
AT BOND X
BROADWAY



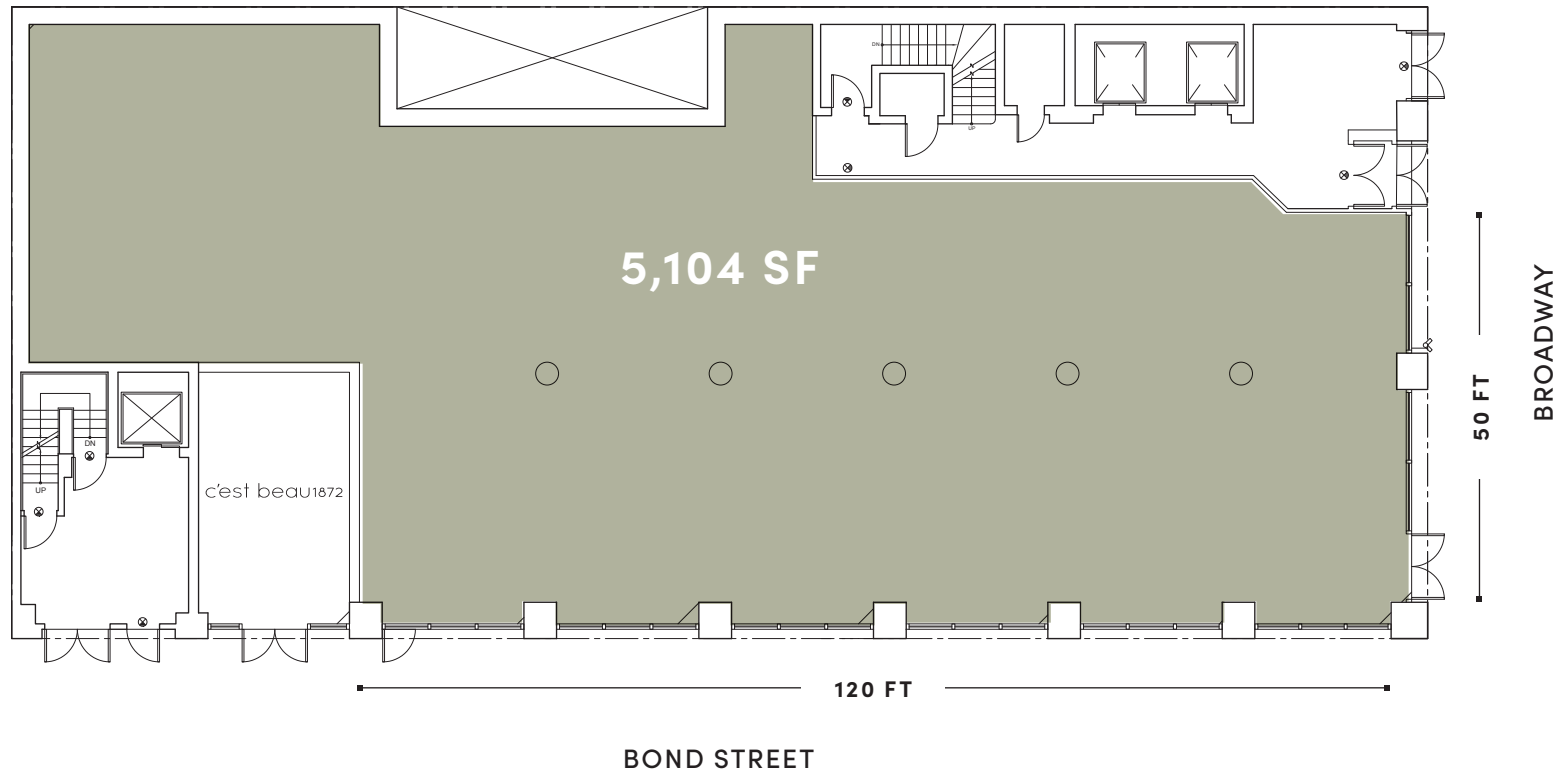
SUPERIOR CORNER LOCATION

PRESTIGIOUS SIGNAGE AND BRANDING
OPPORTUNITIES

ACCESS TO **B** **D** **F** **M** **6** SUBWAY LINES

SPACE DETAILS

GROUND FLOOR



SIZE

GROUND FLOOR 5,104 SF

FRONTAGE

50 FT ON BROADWAY
120 FT ON BOND STREET

CEILING HEIGHTS

GROUND FLOOR 16 FT

POSSESSION

IMMEDIATE

TERM

LONG TERM

SITE STATUS

FORMERLY TD BANK

JOIN EQUINOX, KITH, HEALTHQUARTERS,
CITYMD, CASPER, LEVAIN BAKERY, SOULCYCLE
AND STARBUCKS

CONTACT EXCLUSIVE AGENTS

MITCH HEIFETZ
212.916.2934
mitchell.heifetz@nmrk.com

ARIEL SCHUSTER
212.331.0132
ariel.schuster@nmrk.com

NEWMARK

© 2022 NEWMARK RETAIL The information contained herein has been obtained from sources deemed reliable but has not been verified and no guarantee, warranty or representation, either express or implied, is made with respect to such information. Terms of sale or lease and availability are subject to change or withdrawal without notice.

